

Anti-slip R11

The Anti-slip of our 2cm outdoor tile reaches R11, similar to natural stones, R12 is also available for some series.

Natural Stone Texture

Since natural stones become less and less, SALANTE 2CM thick tiles would be a best replacement due to their texture and finishing.

High Breaking Strength

The breaking strength of our 2CM thick tiles reach 10200N, while the same strength of stone should be with 4CM thickness.

Full Body

SALANTE 2cm outdoor porcelain tiles are with water absorption $\leq 0.5\%$ and abrasion resistance: class3

4 ADVANTAGES



Staircase tile

B32C0606-18LT
300x1200mm



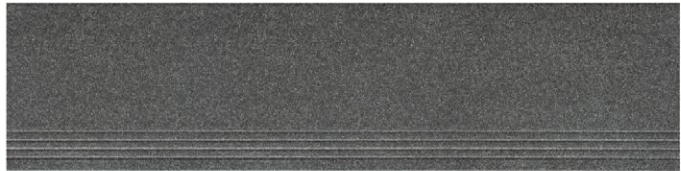
B32C0603-18LT



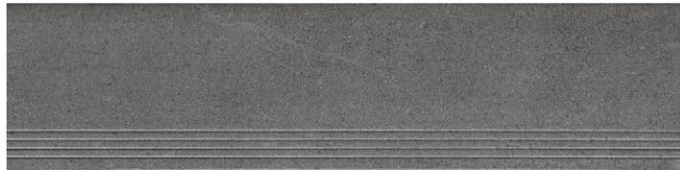
B32C0803-18LT



B32C0606-18LT



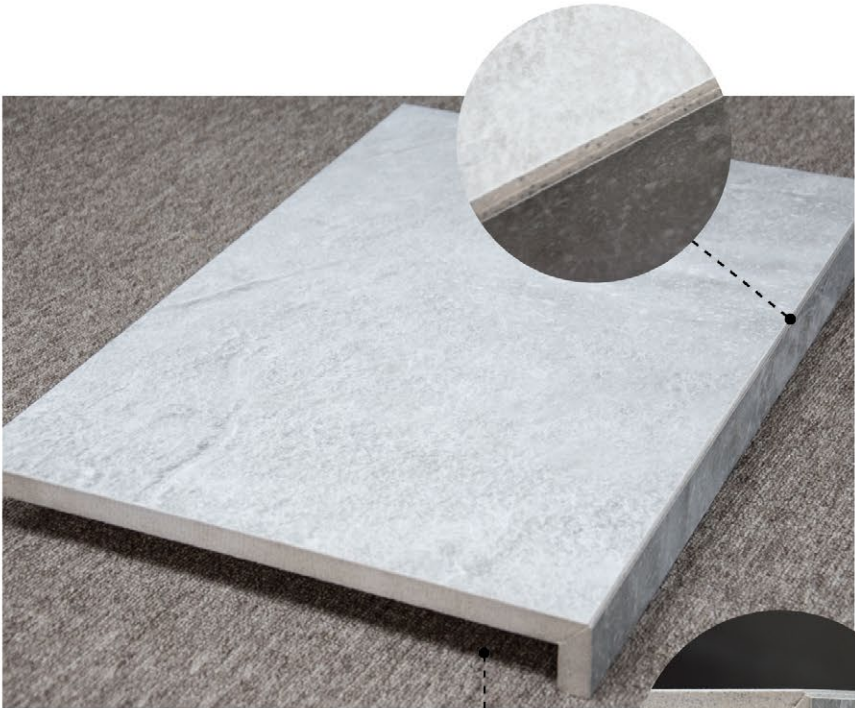
B32C0727-18LT



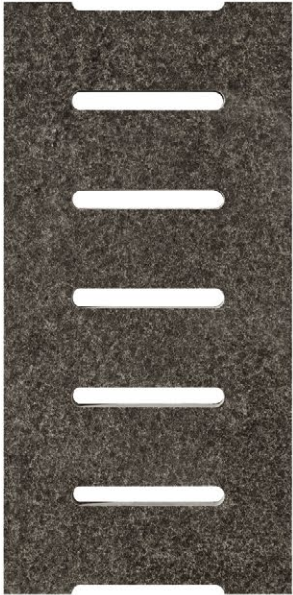
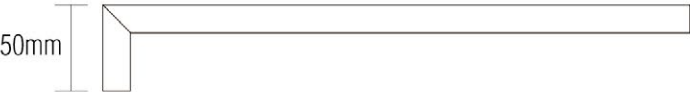
B32C0607-18LT



B32C0735-18LT



REBATED 50



DRAINAGE

B60C0727-20
300x600mm

Destination of use

Thickness 20mm finds its perfect application in private and public outdoor areas such as terraces, balconies, rooftop, sundecks, pathways, patios, bathing resorts, swimming-pool decks and carriageable paths.



GARDENS



TERRACES



PATHWAYS



PATIOS



SWIMMING-POOL



BATHING RESORTS
SPIAGGE



GARRIAGEABLE
PATHS



URBAN DESIGN
ARREDO

● Professional in accessories processing. Customized designs are warmly welcome.

I N D E X

NUAGE	3
TRAVERTINE	11
CREMA SANDS	15
SHALE LIGHT GREY	19
PIETRA GREY	23
SILVER TRAVERTINE	25
GREY GUM QUARTZITE	29
TUNDAR	33
JURASSIC	35
BASALT-20	39
GRANITE	41



NUAGE

SERIES

AVAILABLE SIZE

6 0 0 x 6 0 0 6 0 0 x 1 2 0 0
2 4 " x 2 4 " 2 4 " x 4 8 "

THICKNESS W.A
20mm ≤ **0.5%**

TEXTURE
FULLBODY

REGULAR SURFACE

M **R11**
Matt R11

L
Lappato



NUAGE NERO
6 0 0 x 6 0 0 2 4 " x 2 4 "



NUAGE BEIGE
6 0 0 x 6 0 0 2 4 " x 2 4 "



3 SUFACE



2 THICKNESS



2 DECOR



NUAGE TAUPE

600x600 24"x24"

Decor / Bush hammered



NUAGE TAUPE

600x600 24"x24"



NUAGE GRIGIO

600x1200 24"x48"

2 SIZE / 12 FACE



600x1200
24"x48"



600x600
24"x24"





NUAGE BEIGE
600x600 24"x24"

COLORS



C R E A M



B E I G E



G R I G I O



T A U P E



N E R O

TRAVERTINE

SERIES

AVAILABLE SIZE

4 0 0 x 6 0 0

1 6 " x 2 4 "

(non-rectified)

6 0 0 x 6 0 0

2 4 " x 2 4 "

THICKNESS

20mm

W.A

≤ 0.5%

TEXTURE

FULLBODY

REGULAR SURFACE



ORIGINAL

4 0 0 x 6 0 0

1 2 " x 2 4 "



ORIGINAL



COLORS



ORIGINAL



SILVER



IVORY

CREMA SANDS

SERIES

AVAILABLE SIZE

4 0 0 x 6 0 0
1 6 " x 2 4 "
(non-rectified)

REGULAR SURFACE



THICKNESS

20mm

W.A

≤ 0.5%


TEXTURE
FULLBODY



SILVER

4 0 0 x 6 0 0 1 6 " x 2 4 "



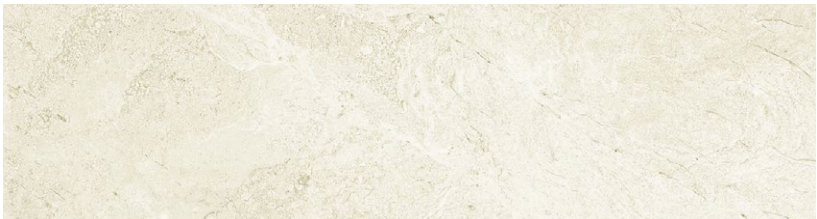
 SILVER

4 0 0 x 6 0 0 1 6 " x 2 4 "

ORIGINAL



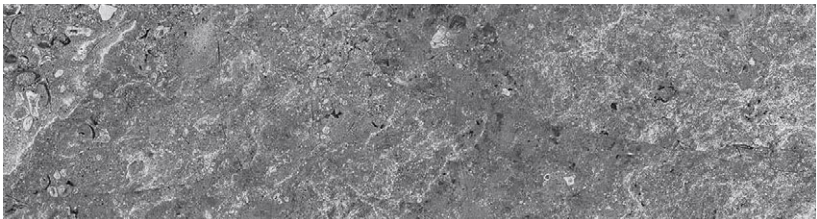
COLORS



ORIGINAL



SILVER



CHARCOAL

SHALE LIGHT GREY

SERIES

AVAILABLE SIZE

600 x 600
24" x 24"

THICKNESS

20mm

W.A

≤ 0.5%

REGULAR SURFACE



R12

FULLBODY



SHALE LIGHT GREY



PIETRA GREY

SERIES

AVAILABLE SIZE

6 0 0 x 6 0 0
2 4 " x 2 4 "

THICKNESS

20mm

W.A

≤ 0.5%

REGULAR SURFACE



R12

FULLBODY



SILVER TRAVERTINE

S E R I E S

AVAILABLE SIZE

6 0 0 x 6 0 0
2 4 " x 2 4 "

THICKNESS

20mm

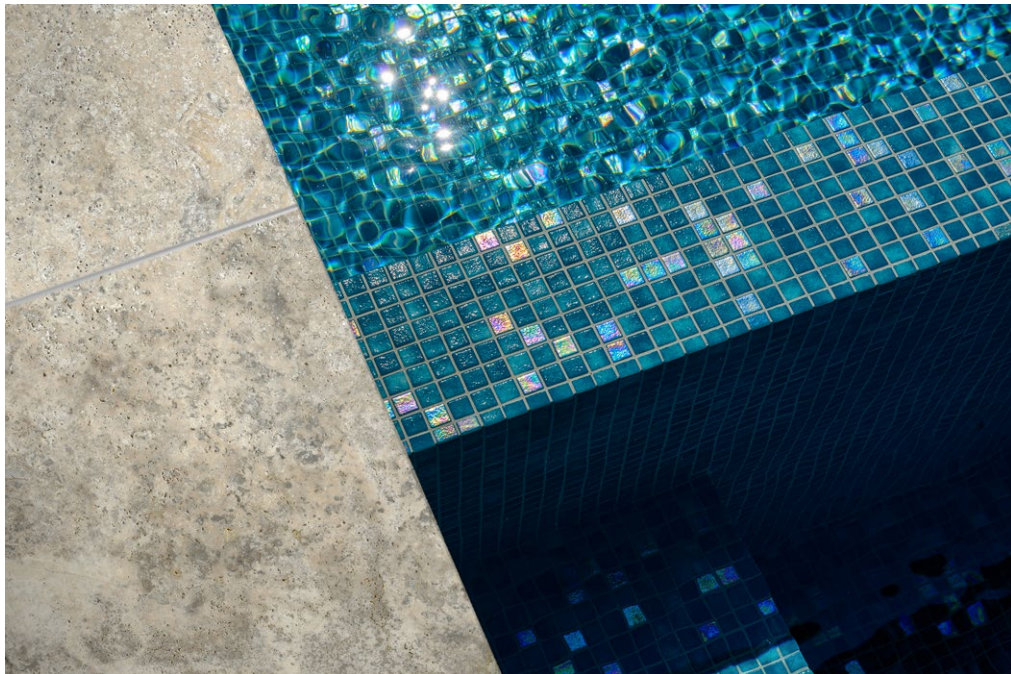
W.A

≤ **0.5%**

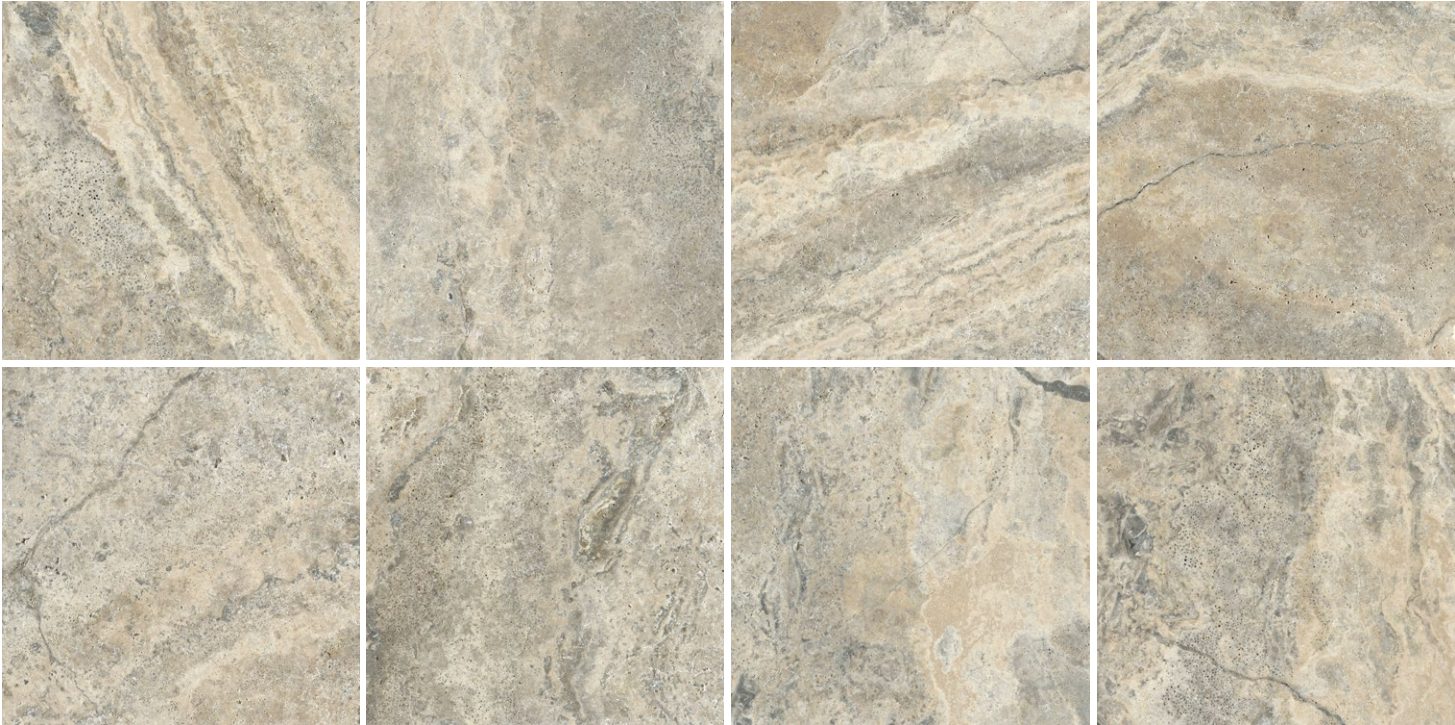
REGULAR SURFACE



FULLBODY



SILVER TRAVERTINE



GREY GUM QUARTZITE

S E R I E S

AVAILABLE SIZE

6 0 0 x 6 0 0
2 4 " x 2 4 "

THICKNESS

20mm

W.A

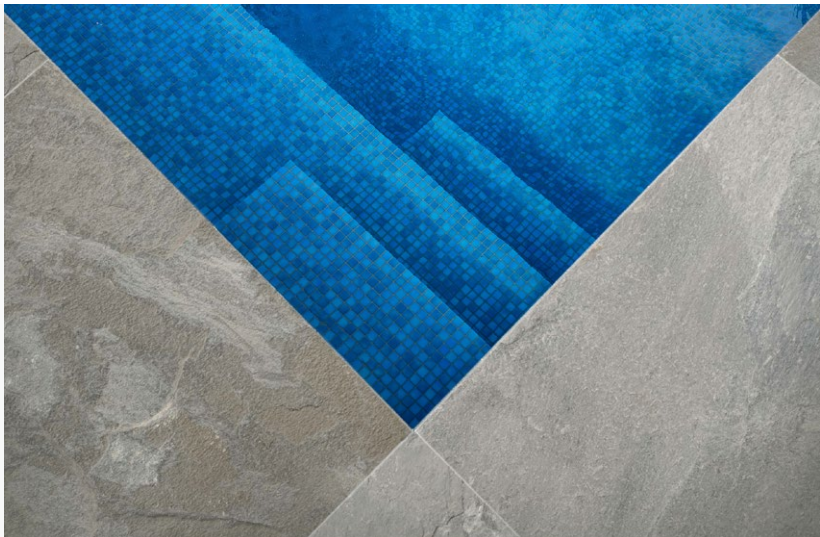
≤ 0.5%

REGULAR SURFACE



R12

FULLBODY



**GREY GUM
QUARTZITE**



TUNDRA

SERIES

AVAILABLE SIZE

600x600
24"x24"

600x1200
24"x48"

REGULAR SURFACE



THICKNESS

20mm

W.A

< 0.1%

B60C0381-20



B60C0382-20



B62B0385-20



B60C0385-20



B62B0385-20

600x1200 24"x48"



JURASSIC

SERIES

AVAILABLE SIZE

600x600	600x1200
24"x24"	24"x48"

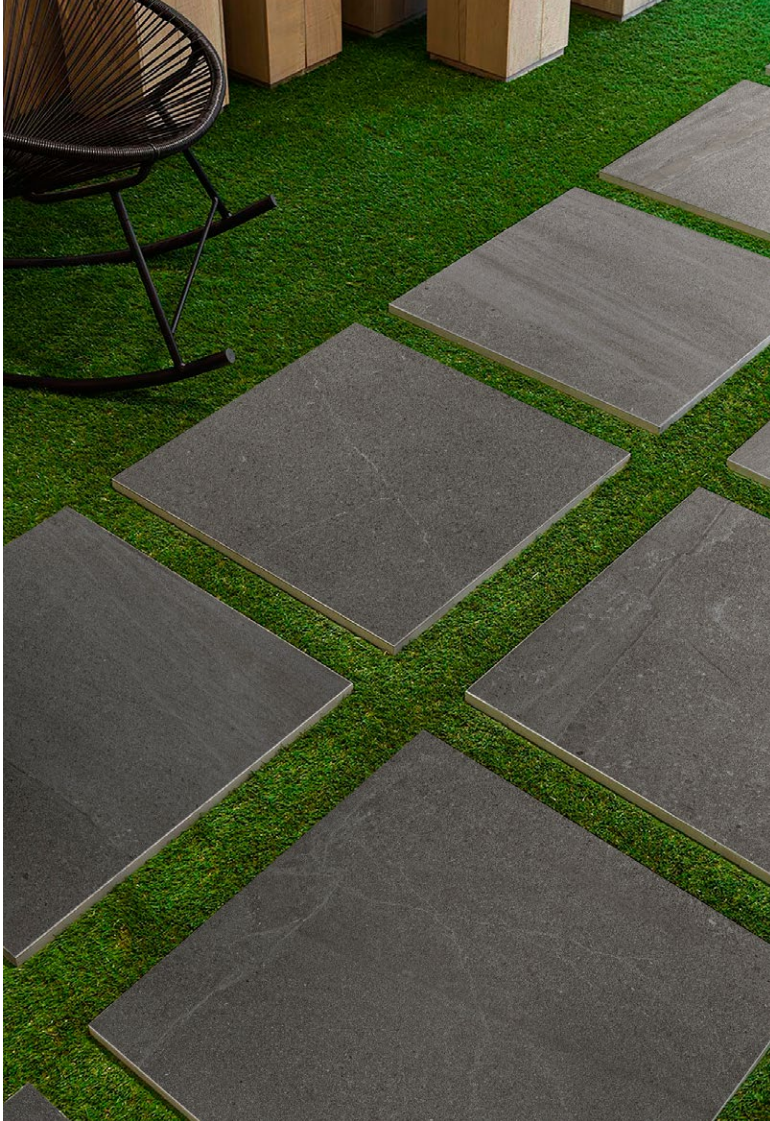
THICKNESS	W.A
20mm	≤ 0.5%

TEXTURE

FULLBODY

REGULAR SURFACE

M	R11
Matt	R11



NERO	B60C0607T
600x600	24"x24"



NERO



B 6 0 C 0 6 0 7 T

COLORS



BEIGE B 6 0 C 0 6 0 2 T



SILVER B 6 0 C 0 6 0 3 T



GRIGIO B 6 0 C 0 6 0 6 T



NERO B 6 0 C 0 6 0 7 T

BASALT-20

S E R I E S

AVAILABLE SIZE

6 0 0 x 6 0 0
2 4 " x 2 4 "

THICKNESS

20mm

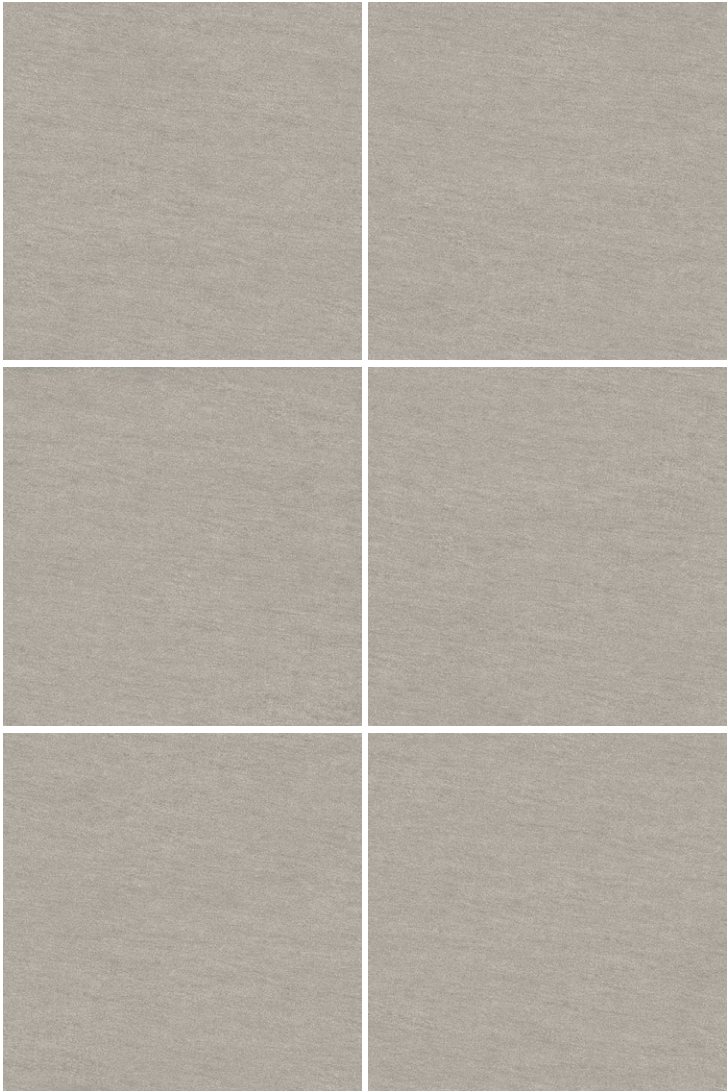
W.A

≤ 0.5%

REGULAR SURFACE



R11



B 6 0 C 0 8 1 7



B 6 0 C 0 8 1 7



B 6 0 C 0 8 1 3

GRANITE

SERIES

AVAILABLE SIZE

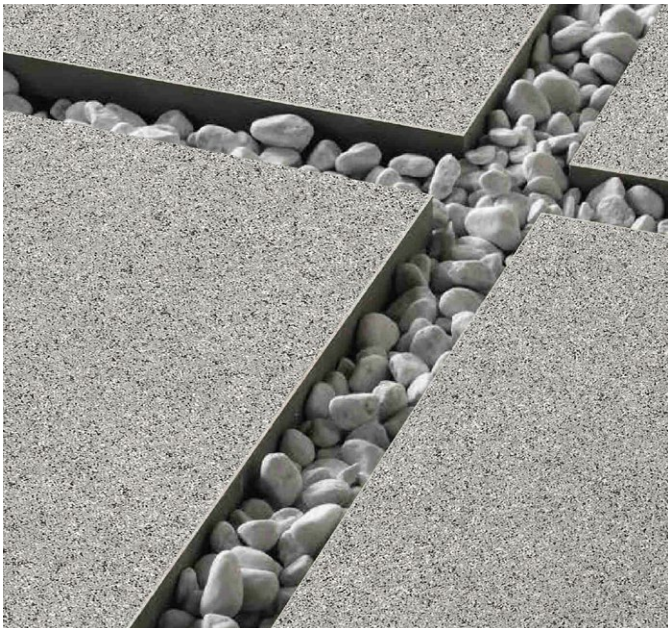
6 0 0 x 6 0 0 6 0 0 x 1 2 0 0
2 4 " x 2 4 " 2 4 " x 4 8 "

THICKNESS

20mm W.A **≤ 0.5%**

TEXTURE
FULLBODY

REGULAR SURFACE

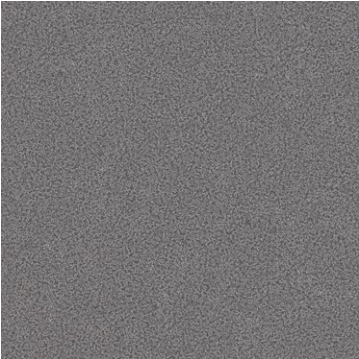


B 6 0 C 0 7 3 5
6 0 0 x 6 0 0 2 4 " x 2 4 "



B 6 0 C 0 5 9 7
6 0 0 x 6 0 0 2 4 " x 2 4 "

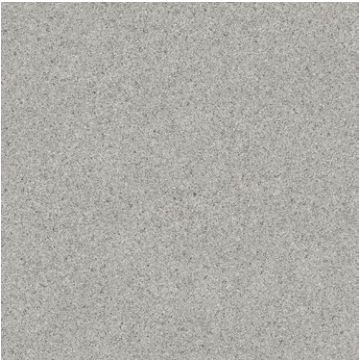
B60C0597



B60C0727



B60C0735



B60C0803



COLORS



B 6 0 C 0 5 9 7



B 6 0 C 0 7 2 7



B 6 0 C 0 7 3 5



B 6 0 C 0 8 0 3

Bla Glazed Porcelain Tiles (W.A.≤ 0.5%)

Test Method	Test Description		ISO 13006 Bla Limits				GB/T4100-2006 (ANNEX G)			
			Surface (cm²)s				Surface (cm²)s			
			≤ 90	90<S≤190	190<S≤410	S>410	≤ 90	90<S≤190	190<S≤ 410	S>410
ISO 10545-2	Length and width		± 1.2%	± 1.0%	± 0.75%	± 0.6%	± 1.2%	± 1.0%	± 0.75%	± 0.6%
	The Manufacturer shall choose the work size as follows: a) for modular tiles in order to allow a nominal joint width of between 2 mm and 5 mm; b) for non-modular tiles so that the difference between the word size and the nominal size is not more than ± 2% (max. ± 5mm) The deviation, in percent, of the average size for each tile (2 or 4 sides) from the work size (w).									
ISO 10545-2	The deviation, in percent, of the average size for each tile (2or 4 sides) from the average size of the 10 test specimens (20 to 40 sides).		± 0.75%	± 0.5%	± 0.5%	± 0.5%	± 0.75%	± 0.5%	± 0.5%	± 0.5%
ISO 10545-2	Thickness	a) The thickness shall be specified by the manufacturer.	—	—	—	—	—	—	—	—
		b) The deviation, in percent, of the average thickness of each tile from the work size thickness.	± 10%	± 10%	± 5%	± 5%	± 10%	± 10%	± 5%	± 5%
ISO 10545-2	Straightness of sides (facial sides) The maximum deviation from straightness, in percent, related to the corresponding work sizes.		± 0.75%	± 0.5%	± 0.5%	± 0.5%	± 0.75%	± 0.5%	± 0.5%	± 0.5%
ISO 10545-2	Rectangularity The maximum deviation from rectangularity, in percent, related to the corresponding work sizes.		± 1.0%	± 0.6%	± 0.6%	± 0.6%	± 1.0%	± 0.6%	± 0.6%	± 0.6%
ISO 10545-2	Surface flatness The maximum deviation from flatness, in percent:	a) central curvature, related to diagonal calculated from the work sizes;	± 1.0%	± 0.5%	± 0.5%	± 0.5%	± 1.0%	± 0.5%	± 0.5%	± 0.5%
		b) edge curvature, related to the corresponding work sizes;	± 1.0%	± 0.5%	± 0.5%	± 0.5%	± 1.0%	± 0.5%	± 0.5%	± 0.5%
		c) warpage, related to diagonal calculated from the work sizes.	± 1.0%	± 0.5%	± 0.5%	± 0.5%	± 1.0%	± 0.5%	± 0.5%	± 0.5%
ISO 10545-2	Surface Quality		A minimum of 95% of the tiles shall be free from visible defect that would impair the appearance of a major area of tiles.				A minimum of 95% of the tiles shall be free from visible defect that would impair the appearance of a major area of tiles.			
ISO 10545-3	Water absorption Percent by mass		≤0.5% individual maximum 0.6%				≤ 0.5% individual maximum 0.6%			
ISO 10545-4	Breaking strength in N	a) thickness ≥ 7.5mm	Not less than 1300				Not less than 1300			
		b) thickness < 7.5mm	Not less than 700				Not less than 700			
ISO 10545-4	Modulus of rupture, in N/mm Not applicable to tiles with breacking strength ≥ 3000N		Minimum 35 Individual minimum 32				Minimum 35 Individual minimum 32			
ISO 10545-6	Abrasion resistance	a) resistance to deep abrasion of unglazed tiles: removed volume, in cubic millimeters.	Max. 175				Max. 175			
ISO 10545-7		b) resistance to surface abrasion of glazed tiles intended for use on floors.	Report abrasion class and cycles passed				Report abrasion class and cycles passed			
ISO 10545-8	Coefficient of linear thermal expansion	For ambient temperature to 100 C.	Test method available				Test method available			
ISO 10545-9	Thermal shock resistance		Test method available				Test method available			
ISO 10545-11	Crazing resistance: glazed tiles		Required				Required			
ISO 10545-17	Coefficient of friction Tiles intended for use on floor		Manufacturer to state value and test method used				Manufacturer to state value and test method used			
ISO 10545-10	Moisture expansion, in mm/m		Test method available				Test method available			
ISO 10545-16	Small colour differences		Test method available				Test method available			
ISO 10545-5	Impact resistance		Test method available				Test method available			
ISO 10545-14	Resistance to staining	a) glazed tiles	Minimum class 3				Minimum class 3			
		a) unglazed tiles	Test method available				Test method available			
ISO 10545-13	Resistance to chemicals	Resistance to low concentration acids and alkalis a) glazed tiles b) unglazed tiles	Manufacturer to state classification				Manufacturer to state classification			
		Resistance to high concentrations of acids and alkalis	Test method available				Test method available			
		Resistance to household chemicals and swimming pool salts: a) glazed tiles b) unglazed tiles	Minimum GB Minimum UB				Minimum GB Minimum UB			
ISO 10545-15	Lead and cadmium release		Test method available				Test method available			

PACKING DETAILS

2CM							
SIZE MM	PCS/BOX	SQM/PCS	SQM/BOX	BOXES/PALLET	SQM/PALLET	WEIGHT/BOX (KG)	WEIGHT/PALLET (KG)
600X1200	1	0.72	0.72	43	30.96	33.5	1480
600X600	2	0.36	0.72	40	28.8	32	1280
400X600	2	0.24	0.48	46	22.08	23.5	1081

TECHNICAL DATA

Technical features	2cm stone look glazed porcelain tile	Marble	Granite
Water absorption	E≤0.1%	E≤0.7%	E≤0.4%
Abrasion resistance	Class 3	≤200m3	≤175m3
Breaking strength	>10000N	>1700N	>2100N
DCOF	0.52	—	—
Slipperiness	R11	—	—
Thermal shock Resistance	Excellent	Fine	Fine
Frost resistance	Pass	Approved	Approved
Chemical resistance	GLA	—	—
Color diffeerce	slight difference for the same batch	obvious difference	obvious difference
Radioactivity	Class A	Class A	Class A